

COMPANY\1999 JOBS\99-044 AHTD\WHITERIVER\JOB 110394\dibnt94-96ait1 ACAD SCALE: 1/4"=1'-0"

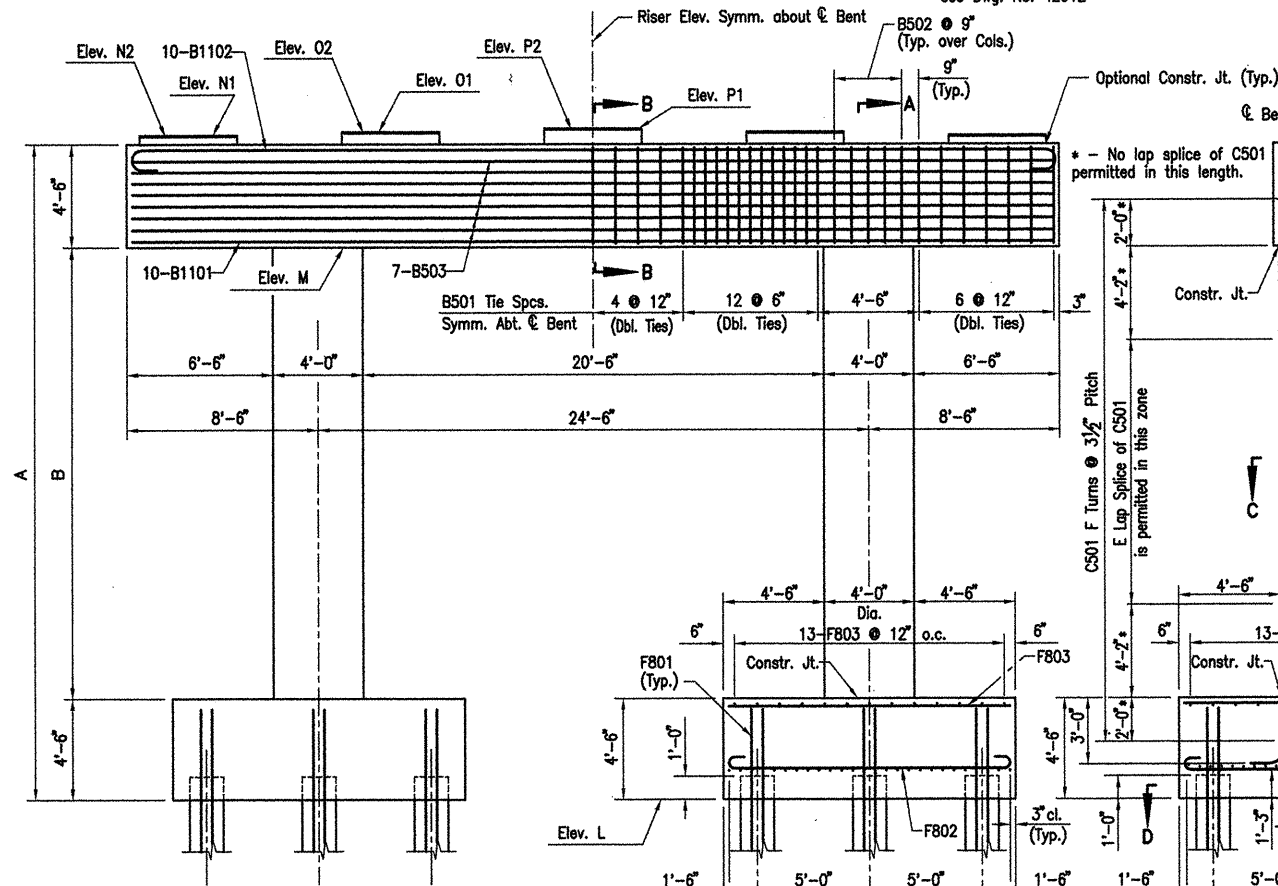
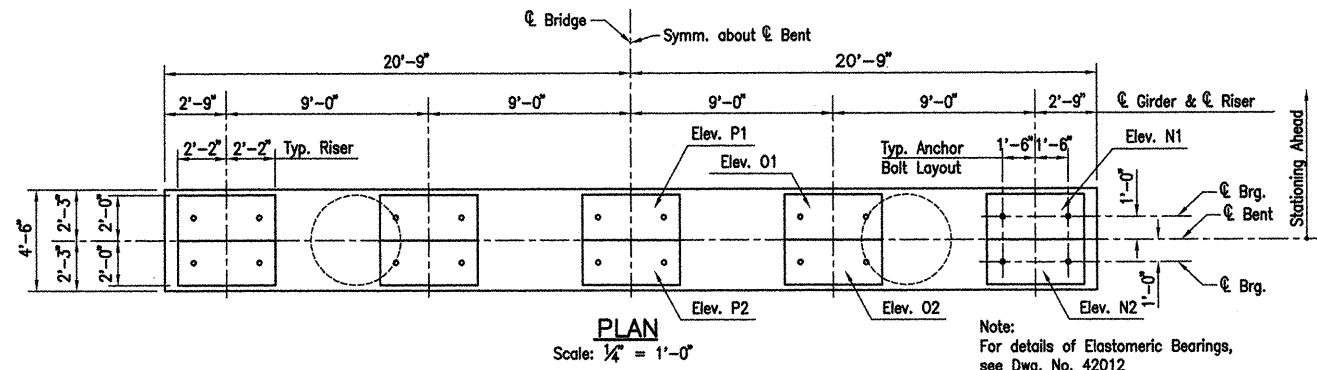
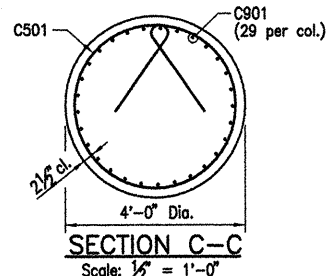


TABLE OF VARIABLES

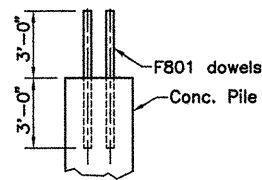
Variable	Bent No.	94	95	96
A	34'-0"	32'-0"	29'-0"	
B	25'-0"	23'-0"	20'-0"	
C	33'-6"	31'-6"	28'-6"	
D	32'-2"	30'-2"	27'-2"	
E	16'-8"	14'-8"	11'-8"	
F	100	93	82	
G	1148'-1"	1068'-5"	946'-3"	
Elev. L	160.90	160.14	160.46	
Elev. M	190.40	187.64	184.96	
Elev. N1	195.23	192.47	189.79	
Elev. O1	195.41	192.65	189.97	
Elev. P1	195.57	192.81	190.13	
Elev. N2	195.29	192.53	189.85	
Elev. O2	195.47	192.71	190.03	
Elev. P2	195.63	192.87	190.18	

Revised 'Table of Variables' by HJE/MM
GPT- 10-15-10



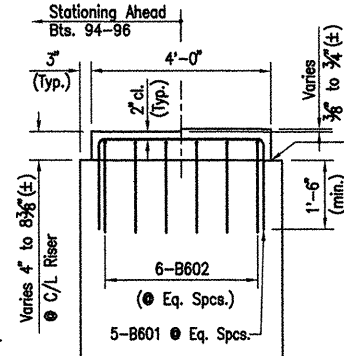
SECTION A-A

Scale: 1/4" = 1'-0"



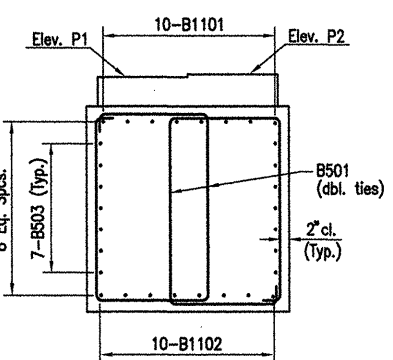
SECTION E-E
N.T.S.

Drill and grout F801 dowels 3'-0" into piles using an approved non-shrink grout or an epoxy grout listed on the QPL. Diameter of holes and installation procedure shall be as recommended by the grout manufacturer.



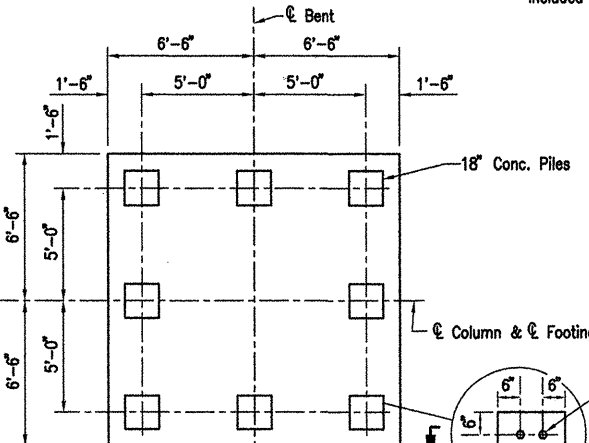
RISER DETAIL

Scale: 1/2" = 1'-0"



SECTION B-B

Scale: 1/2" = 1'-0"



SECTION D-D

Scale: 1/4" = 1'-0"

DATE REVISED	DATE FILMED	DATE REVISED	DATE FILMED	FED. ROAD NO.	STATE	FED. AID PROJ. NO.	SHEET NO.	TOTAL SHEETS
10-15-10	10-2-2-10				ARK.			
					JOB NO.	110394	61	196
					06830	BENTS	41973	

BAR LIST-PER BENT

Mark	No.	Req'd	Length	'A'	'B'	P.D.	Bending Diagrams
B501	94	14'-6"	2'-7"	4'-2"	4'-2"	2 1/2"	Dimensions are out to out of bars.
B502	10	12'-3 1/2"	4'-2"	4'-2"	2 1/2"		
B503	14	41'-2"				Str.	
B601	25	7'-4"	3'-8"	2'-0"	4 1/2"		
B602	30	7'-8"	4'-0"	2'-0"	4 1/2"		
B1101	10	41'-2"				Str.	
B1102	10	44'-2"	41'-2"	1'-0 1/2"	11 1/4"		
C501	2	G					
C502	6	12'-6"					
C901	58	C	D	1'-7 1/4"	9"		
F801	64	6'-0"				Str.	
F802	104	14'-4"	12'-6"	8"	6"		
F803	52	12'-6"				Str.	

NOTES:

- All concrete shall be Class "S". All exposed corners to be chamfered 3/4" unless otherwise noted. All concrete shall be poured in the dry.
- All reinforcing steel shall conform to AASHTO M31 or M53, Gr.60.
- If anchor bolts are drilled into cap, top reinforcing bars shall be properly placed to avoid damage.
- For additional information, see Layout.
- Contractor has option of placing a 6'-0" Lap Splice in the vertical leg of the C901 bar. The Splice shall be in the middle half of the Column. This shall be included under 'Reinforcing Steel-Bridge (Grade 60)'

NOTES FOR SPIRAL REINFORCING

- Ends of spirals in footing and cap shall have 1 1/2 turns and terminate with a 135° hook and a 24" tail as shown in Bar List.
- Spiral reinforcement at splices of bars in the length designated as permissible for lap splices shall be terminated by a 135° hook with a 10" tail hooked around a vertical bar.
- Spiral reinforcement shall be plain round or deformed steel bars meeting the requirements of AASHTO M31 or M53 (Grade 60) or shall be cold drawn wire meeting the requirements of AASHTO M32 or M225 (Grade 70) with a minimum diameter of 0.625".
- Spiral reinforcement shall be paid for at the contract unit price bid per pound for 'Reinforcing Steel - Bridge (Grade 60)'. No additional payment shall be made for spacers, splices or bracing needed for assembly, shipping, handling or erecting.
- Lapped splices in spirals shall be lapped 80 bar diameters minimum.
- Adjust spiral pitch as needed to accommodate footing or cap bars.

ALTERNATE NO. 1

DETAILS OF BENTS - WHITE RIVER
BENTS 94 - 96

WHITE RIVER STR. & APPRS.
(CLARENDON) (PH II) (F)
MONROE COUNTY

ROUTE 79 SEC. 13

ARKANSAS STATE HIGHWAY COMMISSION
LITTLE ROCK, ARK.

Engstrom & Modjeski and Masters, Inc.

DRAWN BY: CJA DATE: Nov. 07 FILENAME: b1103941_b10
CHECKED BY: FS DATE: Nov. 01 SCALE: 1/4"=1'-0"
DESIGNED BY: BMH DATE: Nov. 01
BRIDGE NO. 06830 DRAWING NO. 41973